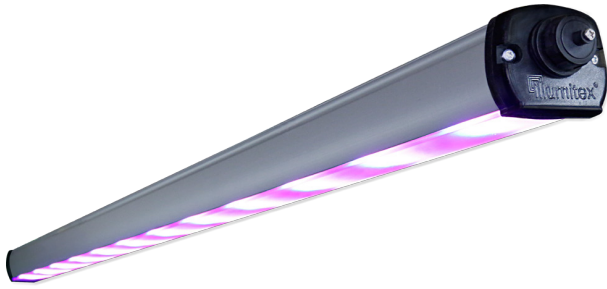


# ECLIPSE W



## FEATURES & SPECIFICATIONS

### General Description

The Eclipse W is ideal for vertical farm applications, but is also suitable for a wide range of other horticulture applications including: greenhouses, growth chambers and tissue culture laboratories. The Eclipse W single bar is designed to deliver high levels of photosynthetic photon flux (PPF) values with unsurpassed light uniformity, all within a slim and water-proof design. For easy installation, the Eclipse W fixtures can be daisy-chained together in runs of up to 15 fixtures. Fixtures are supplied with spring clips for surface mount or unistrut installations.

### Mechanical Construction

Single, 46-inch anodized aluminum extrusions provide thermal management and housing for drivers and wiring. High temperature, molded-silicone gaskets and injection-molded polymer end caps provide protection from dust and moisture. 5-conductor cables and water-tight, locking connectors provide power and dimming from bar to bar. Each bar includes pigtail and male connector on one end and a female connector on opposite end. Maximum bar to bar spacing is 18 inches on centers.

### Electrical Specifications

Each Eclipse W fixtures includes an internal dimmable driver. Input voltage is 120-277VAc and 50-60Hz. 0-10V dimming is standard.

### LEDs

The 120° beam angle ensures that the maximum light intensity is delivered directly to the crop canopy at lower mounting heights.

### Weight

5.4 lbs

### Finish

Clear anodized extrusions with black molded gaskets and end caps.

### Power Consumption

55 watts for F3 spectrum (consult factory for wattage of other spectrums, 75 Watts max)

## Testing & Compliance

RoHS compliant

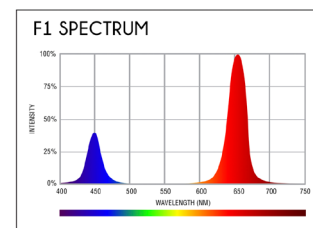
ETL/cETL listing for damp location

5-year warranty

50,000 hour life



## SPECTRA

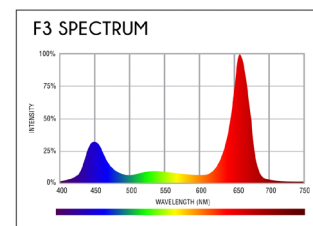


### F1 WAVELENGTH MIX

Blue (400 - 499nm)	22.8%
Green (500 - 599nm)	0.3%
Red (600 - 699nm)	76.8%
Far Red (700 - 780nm)	0.1%

### GENERAL PURPOSE, HIGH EFFICIENCY

F1 spectrum is suitable throughout the plant growth cycle and offers the highest photon yield efficacy of the available spectra. F1 is recommended for applications with a tight energy budget where visual plant assessment is not a priority.

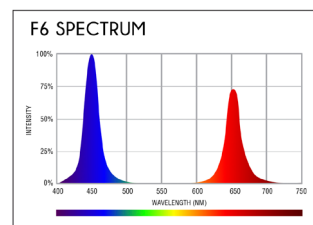


### F3 WAVELENGTH MIX

Blue (400 - 499nm)	22.4 ± 1.3%
Green (500 - 599nm)	13.4 ± 0.6%
Red (600 - 699nm)	63.9 ± 0.8%
Far Red (700 - 780nm)	0.4 ± 0.1%

### BEST FOR GERMINATION THROUGH FLOWERING

The F3 spectrum is the workhorse and most popular spectrum from Illumitex. It produces the fastest germination and drives the best vegetative and flowering results among all of the spectra options. In addition to the blue and red wavelengths, the F3 spectrum contains a small amount of green which is beneficial for the quality assessment of plants. The F3 spectrum is recommended for use in growth chambers as well as controlled environment agriculture operations of any size.



### F6 WAVELENGTH MIX

Blue (400 - 499nm)	49.5%
Green (500 - 599nm)	0.5%
Red (600 - 699nm)	49.9%
Far Red (700 - 780nm)	0.1%

### BEST FOR VEGETATIVE GROWTH

F6 spectrum provides an enhancement in the 400 to 499nm region ensuring the fastest vegetative growth results. The increased blue content reduces overall plant height and improves plant appearance and space utilization.

# EC LIPSE W

## PART NUMBER ORDERING GUIDE

ESW	1	48	12		U	D
SERIES	# OF BARS	BAR LENGTH	# OF LEDs	LED SPECTRA	INPUT	DIMMING
ESW = 120° beam	1 = Single Bar	48 = 48" Over all length	12 = 12 clusters per Bar	Growth: F1 = F1 F3 = F3 F6 = F6	U = 120-277Vac	D = 0-10V Dimmable (standard)

CE5-10CH1 & 2 are listed under accessories.

## INPUT SPECIFICATION

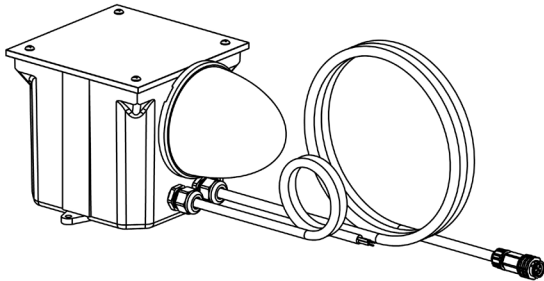
Parameter	Min.	Typ.	Max.	Notes
Input Voltage	120 Vac		277 Vac	
Input Frequency	50 Hz		60 Hz	
Input AC Current *See NOTE 1		0.57		Measure with F3 spectrum at 120 Vac
Power Factor		0.99		120 Vac, Full load
Power		55W		Measured with F3 spectrum at 120 Vac

Notes: 1. Input power varies per spectrum

## CONTROLS (order separately)

WS-JBOX-ESG2: Wireless node j-box (includes node)

WS-225C: Wireless Gateway



## FIXTURE PPF VALUES

SPECTRUM	F1	F3	F6
TYPICAL PPF	98	94	93

## ACCESSORIES (order separately)

CE5-10CH1 (Cable extension, 5-conductor, 10-foot, female connector + flying leads) = power input @ first bar (see wiring diagram)

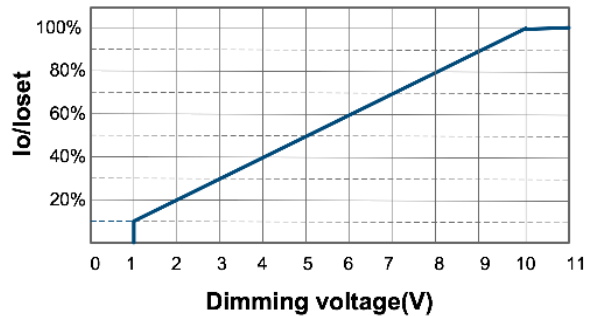
### Wiring Diagram for CE5-10CH1 Input Cable

Black Wire	Line
White Wire	Neutral
Green Wire	Ground
Red Wire	Dimming +
Orange Wire	Dimming -

CE5-10CH2 (Cable extension, 5-conductor, 10-foot, female connector + male connector) = bar to bar extension

## DIMMING FUNCTION

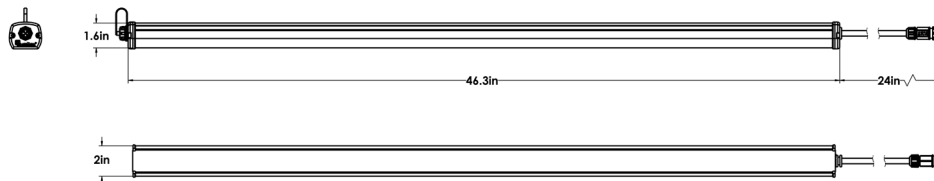
### Io/Ioset vs. Dimming voltage



Notes:

- The maximum current draw of the dimming input (DIM+) is 0.15mA. This will determine the total number of dimming wires that can be tied together to one controller.

## DIMENSION LINE DRAWINGS



Fixture is designed to fit in 48" modules including all connectors and fittings.